

Mobil DTE 10 Excel™ 46 and 68

For Injection Molding Machines

Inject Maximum Productivity



Key benefits



Help minimize maintenance costs and downtime by keeping systems clean up to 3 times longer than competitive oils tested*



Can help reduce power consumption and enhance equipment production through exceptional hydraulic efficiency



Reliable starting and pump protection at a wide temperature range

The risk is on us

We guarantee that Mobil DTE 10 Excel™ 46/68 oil can safely deliver

1%

hydraulic efficiency*.

We will refund **"difference in lubricant value**"** if this guarantee of 1% hydraulic efficiency is not achieved.

Contact an ExxonMobil representative or your authorized Mobil™ distributor to find out more about our Mobil Performance Guarantee

Email: mobil.b2b@exxonmobil.com

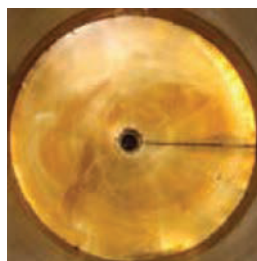
**Refer Terms & Conditions

Mobil DTE 10 Excel™ Series

Typical properties*

Mobil DTE 10 Excel™ Series	46	68
ISO Viscosity Grade	46	68
Viscosity, ASTM D 445		
cSt @ 40°C	45.6	68.4
cSt @ 100°C	8.45	11.17
Viscosity Index, ASTM D 2270	164	156
Brookfield Viscosity ASTM D 2983, cP @ -20°C	1870	3990
Brookfield Viscosity ASTM D 2983, cP @ -30°C	7060	16380
Brookfield Viscosity ASTM D 2983, cP @ -40°C	55770	
Tapered Roller Bearing (CEC L-45-A-99), % Viscosity Loss	7	11
Density 15°C, ASTM D 4052, kg/L	0.8502	0.8626
Copper Strip Corrosion, ASTM D 130, 3 hrs @ 100°C	1B	1B
FZG Gear Test, DIN 51354, Fail Stage	12	12
Pour Point, °C, ASTM D 97	-45	-39
Flash Point, °C, ASTM D 92	232	240
Foam Sequence I, II, III, ASTM D 892, ml	20/0	20/0
Dielectric Strength, kV, ASTM D877	41	
Acute Aquatic Toxicity (LC-50, OECD 203)	pass	pass

Ultra keep-clean performance



Leading competitor
750 hours



Mobil DTE 10 Excel™ Series
2,500 hours

In demanding proprietary MHFD testing, Mobil DTE 10 Excel™ Series hydraulic oils outlast competitive mineral-based products, keeping systems cleaner more than three times longer.

Industrial Lubricants



**Advancing
Productivity™**

Safety

With significantly enhanced oil and filter replacement intervals, Mobil DTE 10 Excel™ Series oils minimize the need for maintenance and its inherent safety risks arising from direct contact with equipment.

Environmental Care†

Through exceptional hydraulic efficiency, Mobil DTE 10 Excel™ Series oils can potentially help reduce power consumption compared to standard hydraulic oils. Long lubricant life helps minimize the need for waste oil disposal.

Productivity

By helping you achieve trouble-free equipment operation, Mobil DTE 10 Excel™ Series lubricants can help you achieve new heights of operational productivity.

*Typical properties are typical of those obtained with normal production tolerance and do not constitute a specification. Variations that do not affect product performance are to be expected during normal manufacture and at different blending locations. The information contained herein is subject to change without notice. All products may not be available locally. For more information, contact your local ExxonMobil contact or visit exxonmobil.com. ExxonMobil is comprised of numerous affiliates and subsidiaries, many with names that include Esso, Mobil, or ExxonMobil.

Nothing in this document is intended to override or supersede the corporate separateness of local entities. Responsibility for local action and accountability remains with the local ExxonMobil-affiliate entities.

†Visit mobil.co.in/business to learn how certain Mobil-branded lubricants may provide benefits to help minimize environmental impact.

Actual benefits will depend upon product selected, operating conditions and applications.

Mobil DTE 10 Excel™ Series

What the Guarantee Covers?

ExxonMobil Lubricants Private Limited ("EMLPL") provides a guarantee to its customers purchasing Mobil DTE 10 Excel™ 46/68 lubricants during the offer period from an authorized distributor of EMLPL.

Please take note of the general Terms & Conditions that are must to be eligible under this special offer:**

- Offer is valid from 25th September 2023 to 30th November 2023 and is limited to the first 50 customers per qualification with EM representative for one machine each.
- Offer is valid for conversion from Mobil DTE™ 25/26 Ultra, Mobil Nuto™ H 46/68, or competition hydraulic oil ISO VG 46/68 (For reimbursement please refer to the below point)
- Reimbursement will be done for the purchase price difference between the existing product and Mobil DTE 10 Excel™ 46/68, capped at a maximum of INR 30/ L
- The equipment must be in good operating condition at the time the lubricant is charged and must have been operated within the limits specified by the OEM
- The lubricant must be selected and maintained in accordance with the specifications of the original equipment manufacturer and the written recommendations provided by EMLPL at the time of sale
- Recommended flushing & changeover guidelines to be followed as per EMLPL

Note: If your equipment is covered by the manufacturer's guarantee, you should follow the oil change guideline recommended in your manual book to avoid any disruption in the manufacturer's guarantee.

What the Guarantee Does Not Cover

This guarantee does not cover:

1. Mobil-branded lubricants used in mechanically deficient equipment, where the deficiency results from but is not limited to: pre-existing conditions; abnormal operation; negligence; abuse; damage from casualty, shipment, accident; or equipment modification is done without written authorization from the OEM.
2. Mobil-branded lubricants used in equipment do not match the OEM-required lubricant standards stated by EMLPL, without prior written approval from EMLPL.
3. Mobil-branded lubricants and/or equipment pieces that have been used in conjunction with any other product or additive that has not been authorized for use by EMLPL.
4. Failure of lubricant due to external contamination such as water, dirt, or any other contaminants.

How can you claim the guarantee?

To file a claim under this product guarantee, you must satisfy the following conditions:

- All claims are to be submitted by 31st December 2023 only and customers are to purchase Mobil DTE 10 Excel™ 46/68 as per the price quoted by the EMLPL distributor
- This offer is not applicable to existing Mobil DTE 10 Excel™ 46/68 users
- Distributor to inform EMLPL sales advisor with details and take consent before initiating trial with customer
- Regular MSLA sampling is mandatory for the program
- Hydraulic efficiency monitoring will be done under the supervision of EMLPL Field Engineering team for a period of one week prior to existing oil and one-week post changeover to Mobil DTE 10 Excel™ 46/68 under the proposed protocol and controlled conditions
- In case of any disputes arising out of this promotion in the market or with customers, ExxonMobil Lubricants Pvt. Ltd.'s (EMLPL) decision would be final and all claims will be validated by the EMLPL team.
- EMLPL reserves the right to amend any terms of the promotion or withdraw the same completely without notice It can also reject any claim if any discrepancy is found